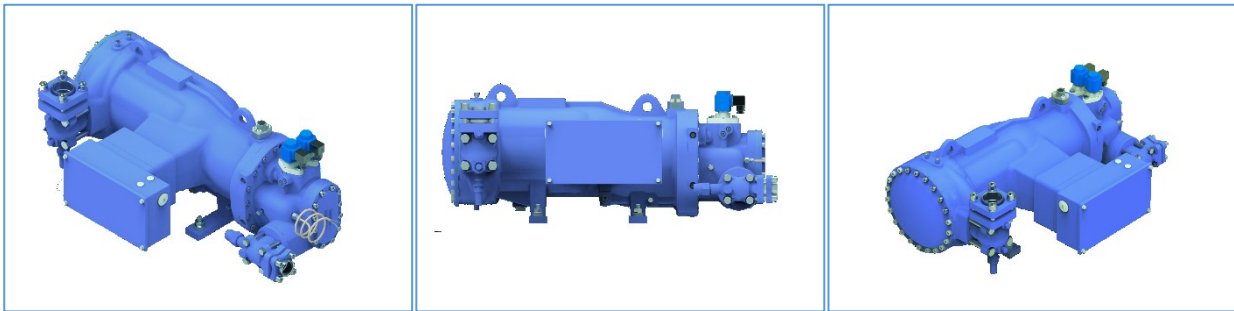
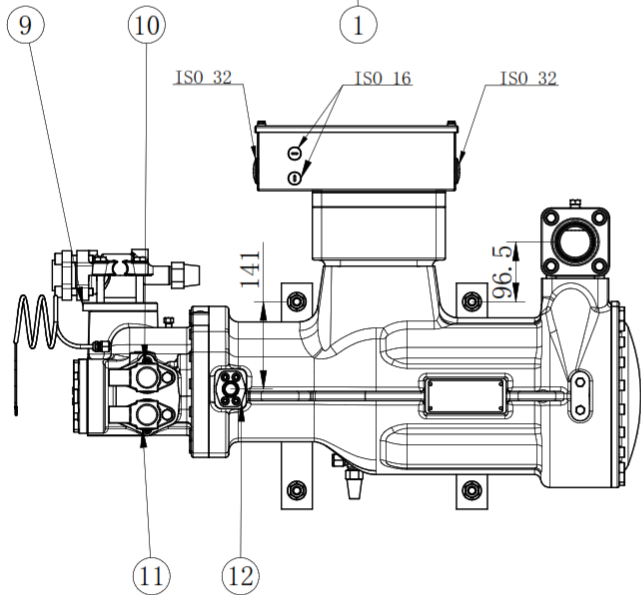
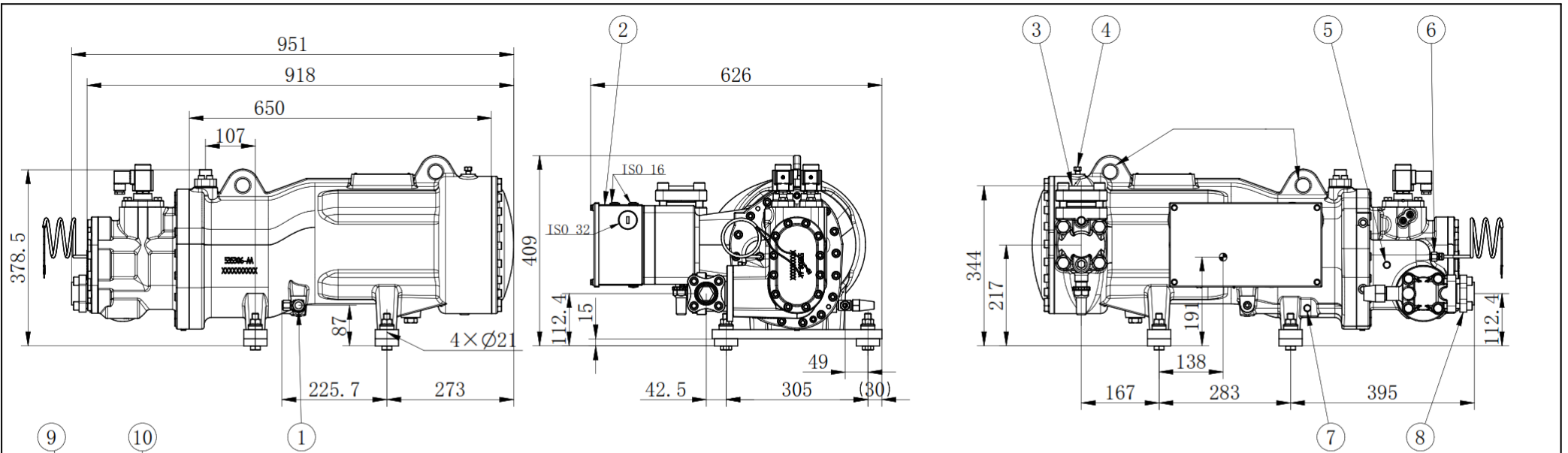


SRS10 HT single-stage hermetic Compressor

srmtecgroup.com/products/compressors/srs-10HT/



SRS10 HT Series	
Model	SRS 10SL
Displacement @2960 rpm [m3/h]	140
Displacement @3600 rpm [m3/h]	168
Capacity Control	Steps 50% - 75% - 100%
Max. rpm	3600
E-motor (kW)	45
Vi Control	Fixed
Vi adjustment range	2,6
Rotation, onto compressor shaft	counter-clockwise, looking at the compressor input shaft
Non-return valve discharge side	Yes
Suction inlet diameter [mm]	OD 60,3; DN50
Discharge outlet diameter [mm]	OD 42,4; DN32
Eco connection [mm]	OD 26; DN20
Design pressure	28 bar
Length [mm]	890
Width [mm]	490
Height [mm]	390
Weight [kg]	240



KEY:

- 1, Oil cooler connection Ø10
- 2, Electrical box
- 3, Suction shut-off valve Ø58
- 4, Low pressure gas 1/8"NPT
- 5, High pressure gas 1/8"NPT
- 6, Discharge temperature sensor 1/8"NPT PTC140°C
- 7, Oil pressure 1/8"NPT
- 8, Discharge shut-off valve Ø42(1-5/8")
- 9, Non return valve
- 10, 50% load Solenoid valve
- 11, 75% load solenoid valve
- 12, Economiser Ø21.6