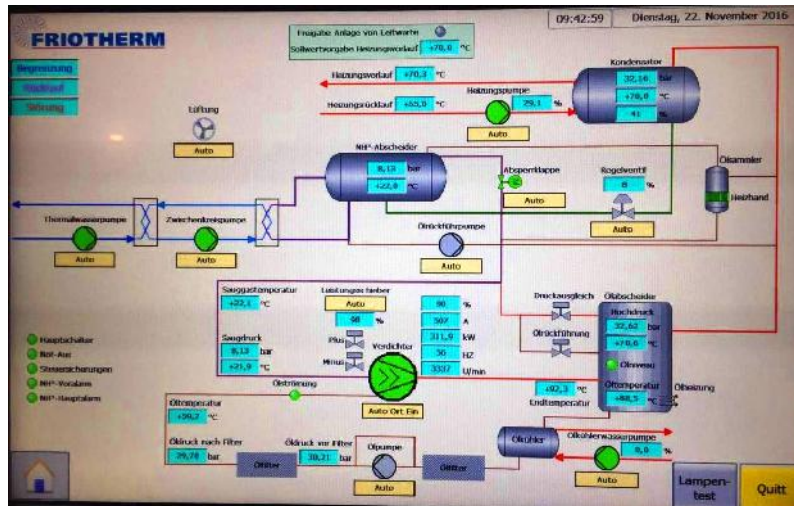


HEATPUMP STRAUBING

Therme Straubing is operated by the city utility provider of Straubing since 16 years as a district heating service. The heat source is thermal ground water of 36°C from which 7 K energy is extracted by the evaporating refrigerant to feed the heating loop of 70°C. Until now the system was driven by an industrial piston compressor set which has reached the end of its operational lifespan. As replacement industrial screw compressors have been chosen due to their reliability and serviceability.



The heat pump is controlled by Siemens S7 PLC and regulates the capacity in co-relation between VSD and the mechanical slider according to the demand of heating energy. With its high COP of 3.8 in combination with the use of environmental benign natural refrigerant R717 this heat pump is at the highest level of today's technology.



MAIN FEATURES:

- ⌋ high-pressure compressor up to 63 bar discharge pressure => heating water up to 90°C.
- ⌋ latest 6/8--i-profile for highest efficiency and lowest demand of oil for lubrication and sealing compliance.
- ⌋ lowest friction due to wear resistant rolling element bearings which were designed for service life of 100,000 hrs. for low service cost.
- ⌋ shaft seal with hardened silicon-carbide surface for best sealing at lowest wear for speed of up to 10,000 rpm.
- ⌋ Step-less Vi-adjustment for best efficiency
- ⌋ Step-less mechanical slider for pro-active capacity control of long-term 10%-100%.

SRMTec offers a range of refrigeration technology equipment focused on natural refrigerants like NH3, CO2 and Hydrocarbons like Propane, Isobutane etc. for all kind of applications in every aspect of modern life. The compressors are the development of Svenska Rotor Maskiner, the pioneer of screw compressor engineering since 1908.

SRM EU is the Organization for European and American customer support and sales of industrial refrigeration solutions. We cooperate closely with our agents and distributors to be a reliable local partner for our customers.

PROJECT DESCRIPTION

Compressor Package

SRMTec : SRH18
Refrigerant: Ammonia R717

Technical Data, Total

Heating Capacity Q: max.1,2MW
Evaporating T: 26° C
Condensing T: 72° C
Heating Water T: 70° C
COP: 3,8
Refrigerant Charge: 260kg
Commissioning: November 2016

Learn more at srmtecgrou.com/products/SRH18

Contacts/Partners of SRMTec Europe

ECR Nederland BV	REFSYS Co	NH3 Solutions	Cool Components	SRM Germany GmbH	Patronas	Kaelitekn	Ref-X AS	Cool Tech Doo	Dicostock SL	SRM REF TECH
Westfields 1210 5688HA Oirschot	475 Fenmar Drive Toronto, ON, M9L 2R6	Stenhejvej 6 3650 Ølstykke	Au Saule 46090 Villesèq	Hasenäcker 12 88142 Wasserburg	Thessaloniki's Ave 97 105 Reykjavik	Raudagerdi 25 0250 Oslo	Filipstadeveien 15 11000 Belgrade	Jugoslovenska 2-13 A 28108 Alcobendas, Madrid	Av.Valgrande 25 13154 Nacka	Fannys Väg 3 13154 Nacka
info@beijerref.nl	gissur@srmtecgrou.com	info@nh3solutions.com	m.crees@cool-comp.com	info@srm-germany.de	info@patronas.co	kaelitaekni@kaelitaekni.is	post@ref-x.no	office@cooltechsolutions.rs	dicostock@dicostock.com	nils.blomster@rotor.se
www.beijerref.nl	www.srmtecgrou.com	www.nh3solutions.com	www.cool-comp.com	www.srm-germany.de	www.patronas.co	www.kaelitaekni.is	www.ref-x.com	www.cooltechsolutions.rs	www.dicostock.com	www.ref-tech.se